

architecture's
choice

Beauty Line

LINER
LAMINATES
PORTFOLIO

Supertech Laminates Pvt Ltd

C-9, Sec-22, Meerut Road Industrial Area
Ghaziabad, UP-201003, India
Email: supertechlam@yahoo.com
Website: www.supertechlaminates.com

Scan QR Code



Download Beauty
Line e-folder





15+
Countries
Worldwide

1000+
Design
Range

29+
Years of
Experience



In 2024 alone, Supertech Laminates reduced approximately 2.5 million kg of CO₂ emissions through sustainable innovations! From using recycled materials and adopting zero-effluent manufacturing to switching from coal to greener fuels, Supertech is committed to protecting the planet. Our low-VOC, long-lasting laminates promote healthier indoor environments—and we're on a mission to become carbon neutral by 2044. Now that's design with a conscience!



Dimensions
2440 x 1220 mm



Four Stage
Quality Check



Full Thickness
Guarantee



Surface- SF, MT,
Glossy, Texture

ABOUT US

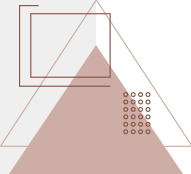
Supertech Laminates Pvt. Ltd. has been a distinguished name in the High-Pressure Decorative Laminates industry for over 23 years. With a strong commitment to quality and innovation, we cater to customers across India, Asia, and beyond.

Our mission is to manufacture premium-quality laminates while providing exceptional service. Our vision is to exceed expectations by setting new benchmarks in design and quality. Backed by manufacturing excellence, our Ghaziabad facility integrates advanced technology with strict quality control to ensure superior products.

Our extensive product range includes Digital, Texture, Industrial, Compact, Metallic, and Liner Laminates, offering limitless design possibilities. Committed to sustainability, we prioritize eco-friendly materials and energy-efficient practices. Our customer-centric approach ensures that each project reflects individual preferences through meticulous craftsmanship and modern aesthetics.

Recognized for excellence, we have received prestigious awards, including the Asia's Famous Brand of the Year Award (2016) and the Business Leadership Award (2014) and Best SSI Unit (2006). At Supertech Laminates, we transform spaces with innovation, elegance, and unmatched quality.

ELEGANT DESIGNS



411



228



227



229

BEAUTY LINE

AVAILABLE : FINISH (GL, MT, SF) | THICKNESS : 0.72, 0.82 & 0.92 MM

AVAILABLE : FINISH (GL, MT, SF) | THICKNESS : 0.72, 0.82 & 0.92 MM

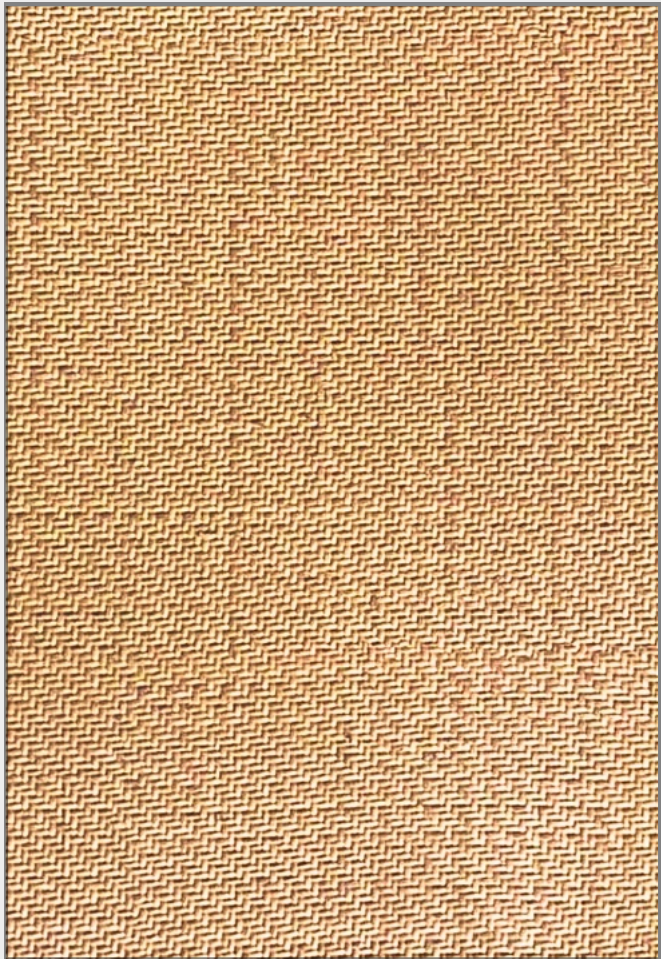
WOODEN SERIES



242



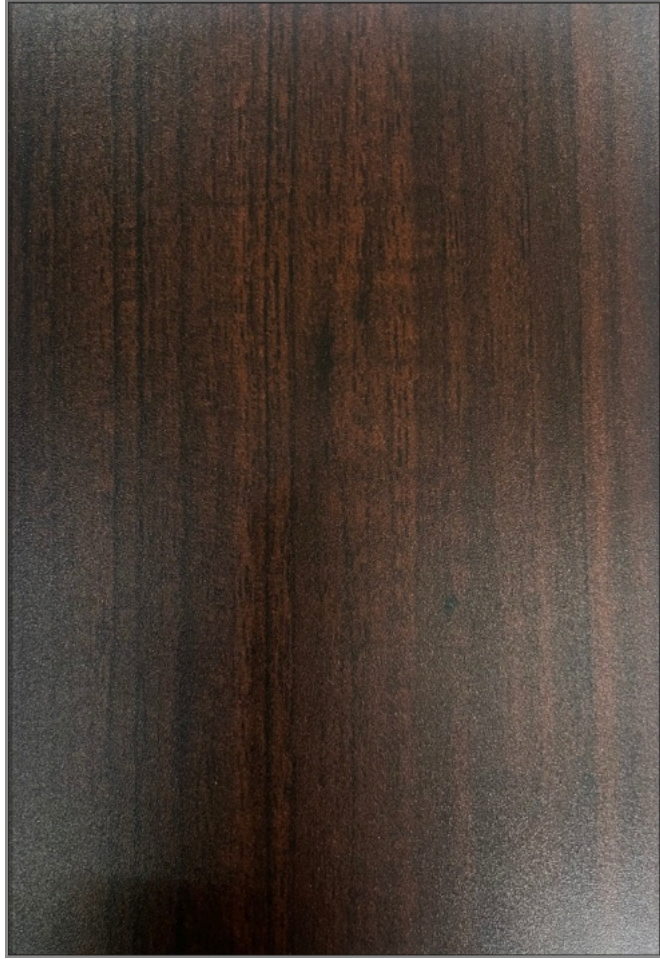
388



546



282



865



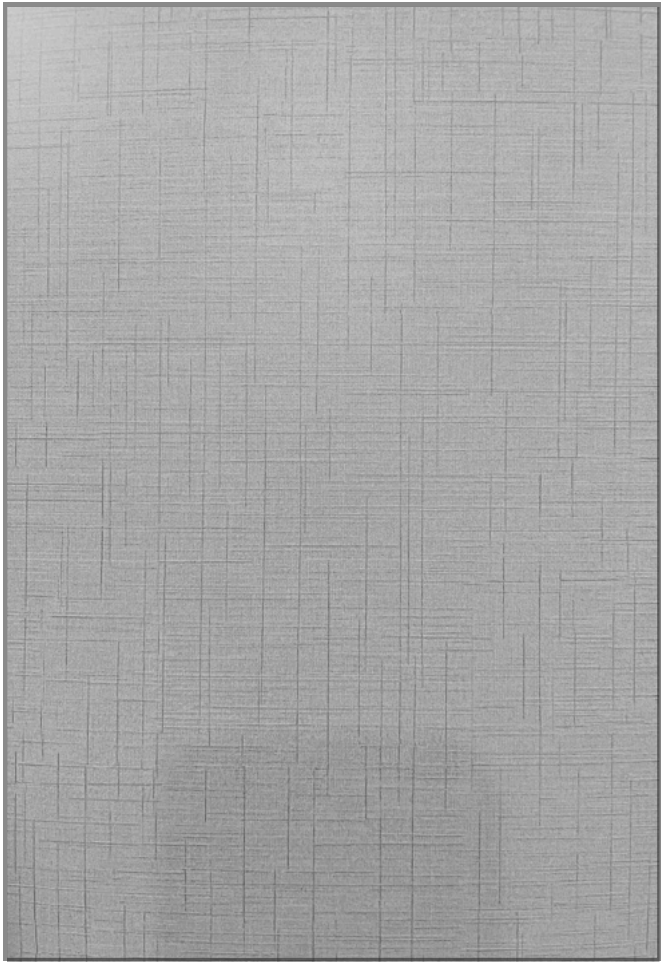
235

AVAILABLE : FINISH (GL, MT, SF) | THICKNESS : 0.72, 0.82 & 0.92 MM

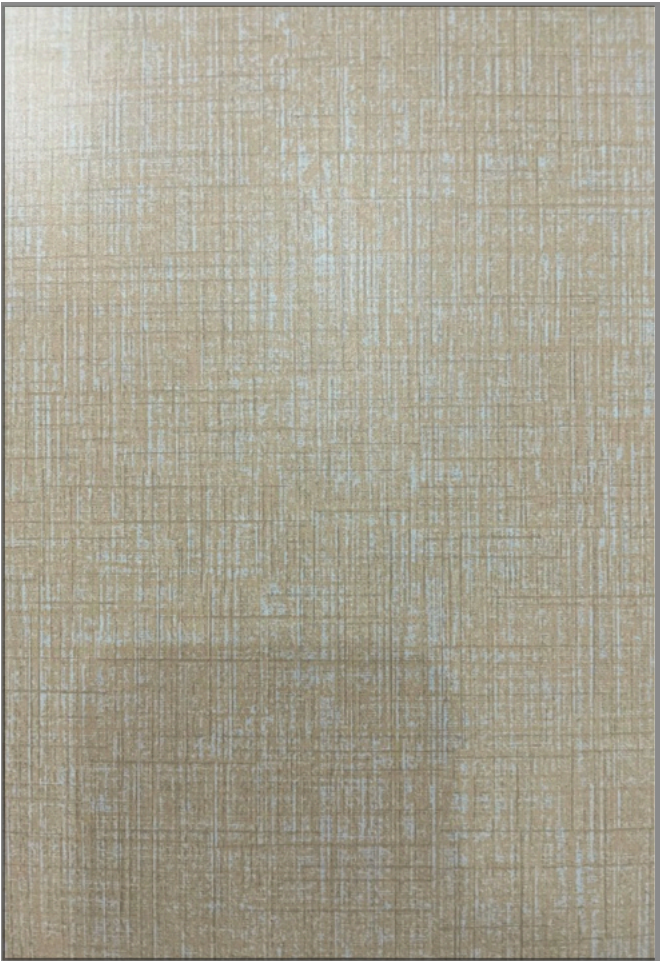
AVAILABLE : FINISH (GL, MT, SF) | THICKNESS : 0.72, 0.82 & 0.92 MM

ELEGANT DESIGNS

BEAUTY LINE



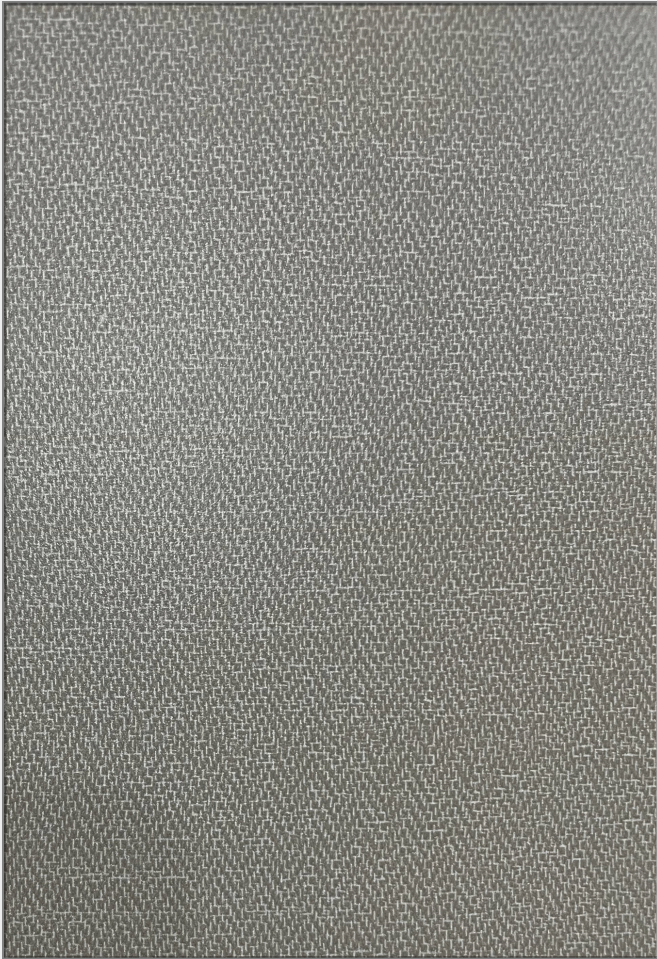
963



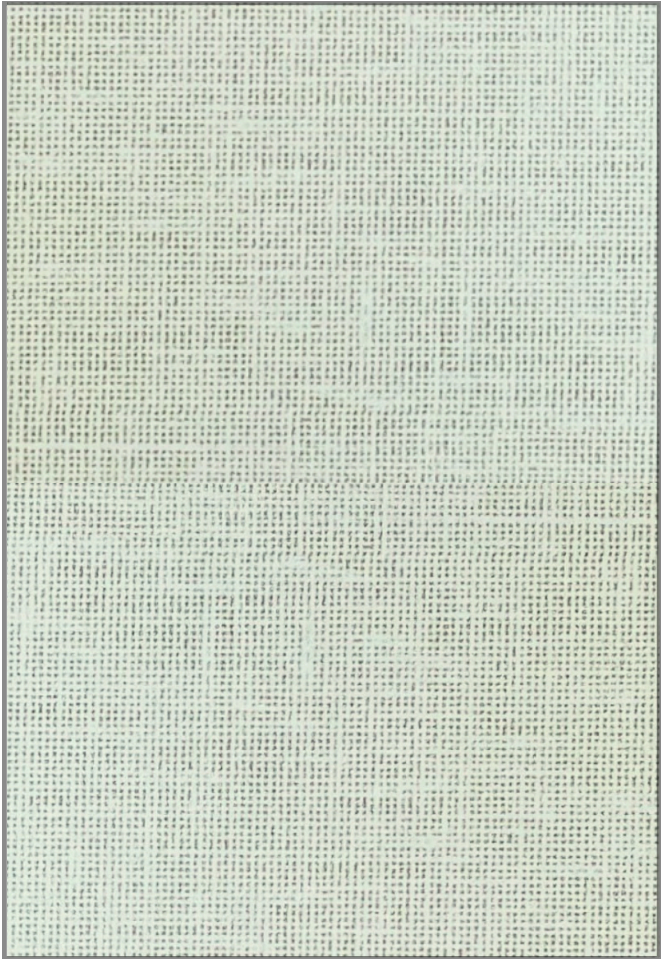
954



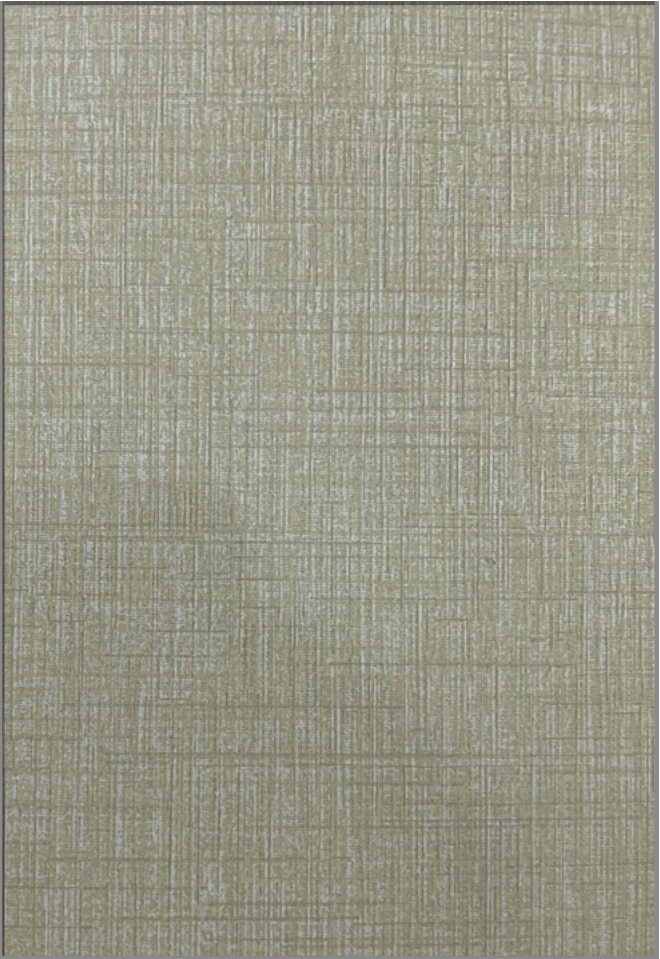
960



961



951



955

AVAILABLE : FINISH (GL, MT, SF) | THICKNESS : 0.72, 0.82 & 0.92 MM

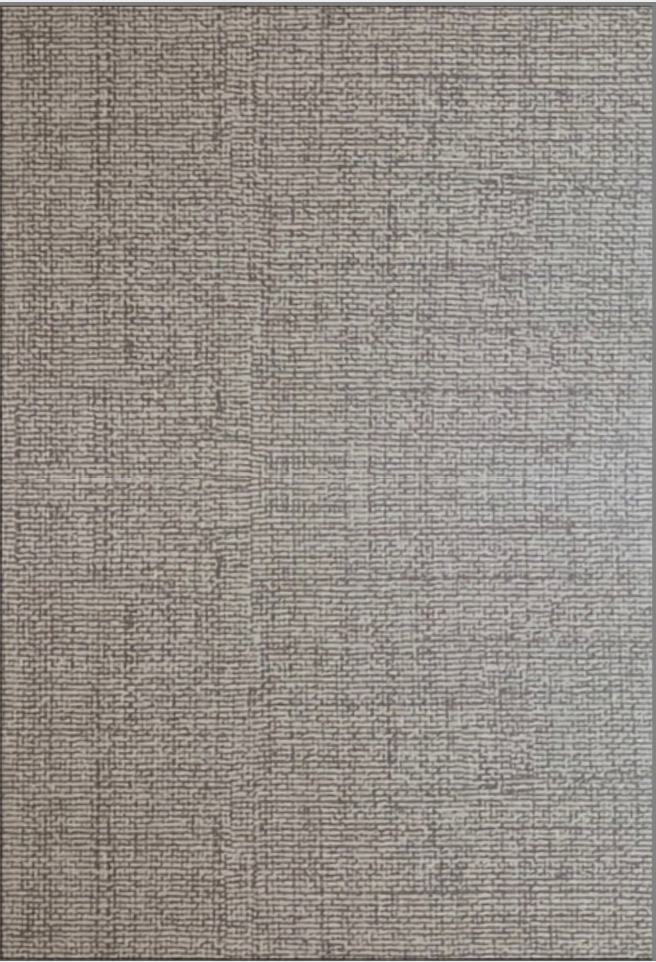
AVAILABLE : FINISH (GL, MT, SF) | THICKNESS : 0.72, 0.82 & 0.92 MM

ELEGANT DESIGNS

BEAUTY LINE



952



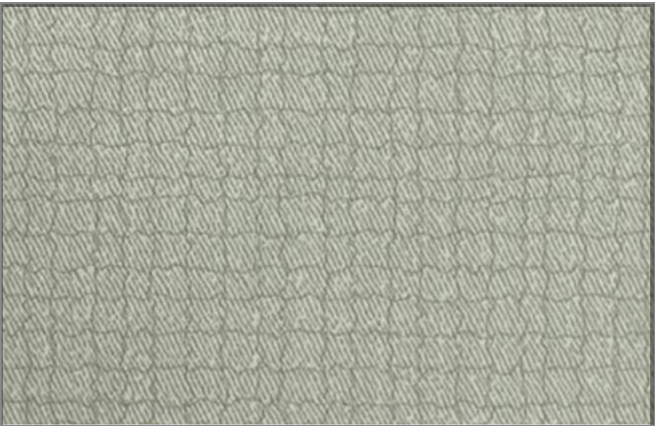
953



958



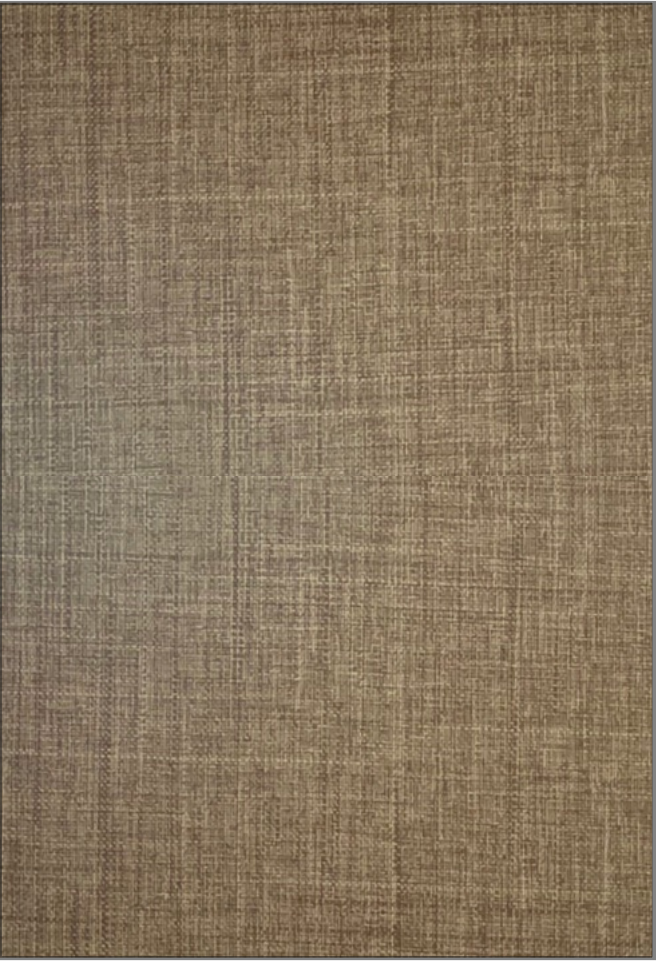
956



230



964



965



AVAILABLE : FINISH (GL, MT, SF) | THICKNESS : 0.72, 0.82 & 0.92 MM

AVAILABLE : FINISH (GL, MT, SF) | THICKNESS : 0.72, 0.82 & 0.92 MM

ELEGANT DESIGNS

BEAUTY LINE

WOOD GRAINS



377



348



642



555



464



627



808



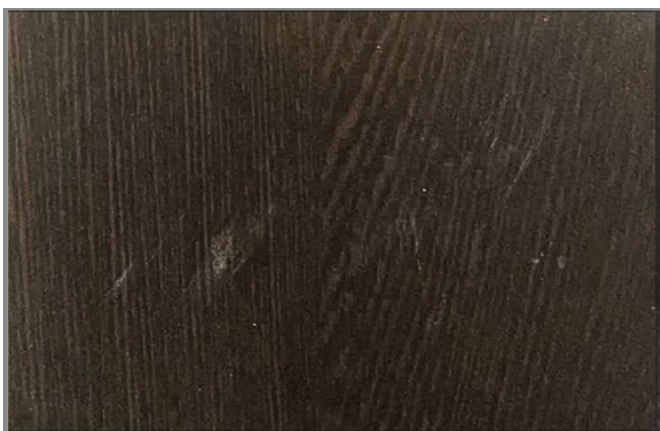
861



380



243



848



433



788

AVAILABLE : FINISH (GL, MT, SF) | THICKNESS : 0.72, 0.82 & 0.92 MM

AVAILABLE : FINISH (GL, MT, SF) | THICKNESS : 0.72, 0.82 & 0.92 MM

ELEGANT DESIGNS

BEAUTY LINE

ELEGANT DESIGNS



101



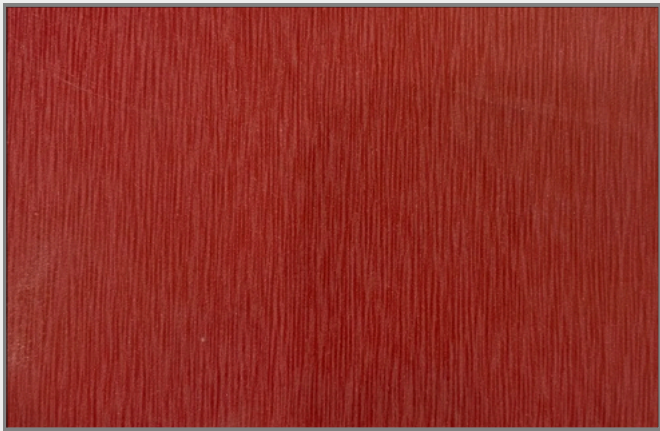
102



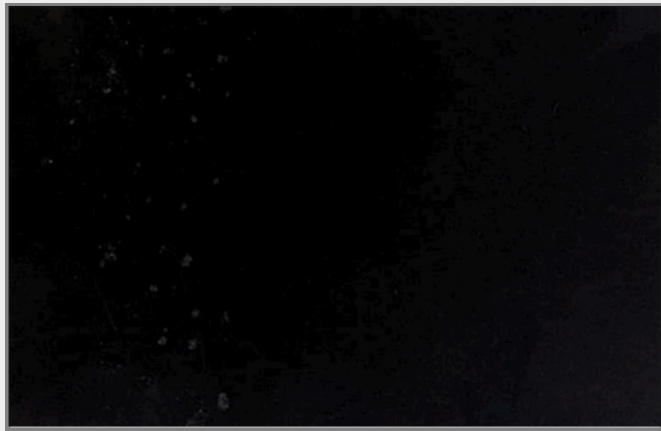
105



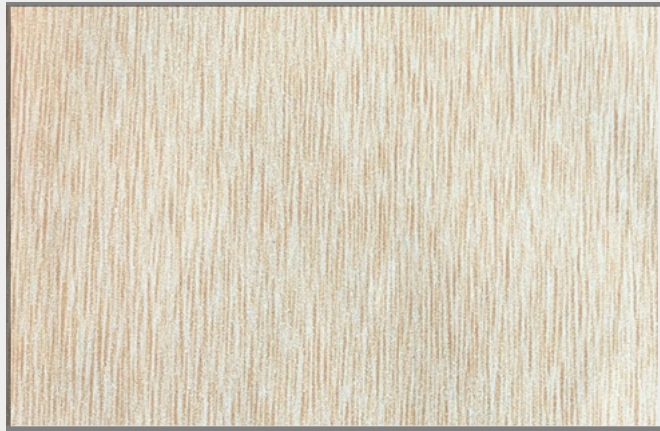
152



364



151



361



359

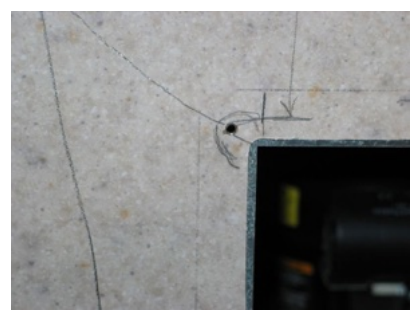
AVAILABLE : FINISH (GL, MT, SF) | THICKNESS : 0.72, 0.82 & 0.92 MM

INDEX

Design	Pg No.	Design	Pg No.	Design	Pg No.
101	11	361	11	861	10
102	11	364	11	865	4
105	11	377	9	951	6
151	11	380	10	952	7
152	11	388	4	953	7
227	2	411	2	954	6
228	2	433	10	955	6
229	2	464	9	956	8
230	8	546	3	958	8
235	4	555	9	960	5
242	4	627	10	961	5
243	10	642	9	963	6
282	3	788	10	964	7
348	9	808	10	965	7
359	11	848	10		



NO CLAIM WILL BE ENTERTAINED FOR AIR BUBBLES



CUTTING A LAMINATE SHEET AT AN ANGLE OF 90 DEGREE LEADS TO DEVELOPMENT OF CRACKS IN CORNER AFTER PASTING. THEREFORE IT IS ADVISABLE TO AVOID CUTTING AT AN ANGLE OF 90 DEGREES.

PRODUCT CARE AND MAINTENANCE

- For cleaning the surface of the laminates, use dry cloth to wipe the stains. If needed can use ordinary liquid detergent (non-acidic) or ammoniated liquid. After taking a trial on small portion.
- Stain remover or Industrial organic solvents can be used to remove stubborn stains in case if there is no problem. One should not use, wire or hard-plastic brushes, and abrasives to clean the surface.
- The LUSTROUS Fancies and Wood collection are specially made laminates to give bright optical view. The properties of these laminates are very sensitivy and thus should be used only for vertical applications. While cleaning these laminates use only dry cloth or wet damp cloth in natural water only.
- Since, conventional laminates are made for interior decorations, should not be used for external use where there are chances for direct exposure to sunlight or any other sort of direct heat.
- It is always recommended to keep the substrate horizontal while pasting the laminates, Immediate removal of pressure and vertical application should not be practiced.
- Samples pasted in the folder represents the finish & design and not the actual thickness.



Scan & Download

(Company warrants that all its products are free from manufacturing defects and perfectly fit for use under normal conditions. In case of any claims, the liability of the Company is however limited to the cost of the product only.)

Note: This folder is only for product promotion and it iis not made for sale

BEAUTY LINE